



# The Yardmaster

## Southwestern Michigan Division



March 2025

Website: <https://div9.ncrnmra.org>



This photo is the Pere Marquette Steam Engine # 1225, from the Steam Railroading Institute.

### Featured Articles this Month:

### Pages

- |                                |       |
|--------------------------------|-------|
| • Superintendent Comments      | 2     |
| • Editor Comments              | 2     |
| • Board Members Contact Info.  | 3     |
| • Upcoming Events              | 3-5   |
| • KMRHS Train Show             | 6     |
| • Favorite Websites            | 8-9   |
| • February Meeting Recap       | 10    |
| • Dan Lewis Presentation Recap | 10-11 |
| • Rich's Travel                | 12-18 |
| • Photos by Garry Johnson      | 19    |
| • Sanborn Maps – Kalamazoo     | 20-24 |
| • For Sale – Free Stuff        | 25    |
| • Reader Comments              | 26    |
| • Wrap-up                      | 27    |

### Non-Train Related Holidays & Special Events – March 2025

**Daylight Savings Starts 3/9**  
**St. Patrick's Day 3-17**  
**1<sup>st</sup> Day of Spring 3/20**  
**Easter 4/20**



## **From the desk of the Superintendent**

Greetings fellow Division 9 members

I'll jump right in by saying that our meeting for January was a success. We had good attendance and a very good guest clinician via Zoom. During my report I shared a product that I added to my tool list. As an electrician I've done numerous soldering projects. One of the challenges and at times frustrating aspects was applying just the correct amount paste flux along with clean up. I finally said enough is enough and searched for a liquid flux. I found a quality product manufactured by Kester (also makes solder) called 186 No Clean Flux Mildly Activated Rosin Liquid Flux, Part #6300000186. Purchased on E-Bay for \$15.19. How much easier to apply (the flux flows into the joint) and then solder the joint. No mess!

Our guest clinician Dan Lewis' (MMR) presentation was on building DPM kits. DPM kits are relatively easy to build kits. Dan took building these kits to a whole new level. His ability to transform a basic kit was amazing. Adding details brought these buildings to life. He also demonstrated how to kit bash DPM structures to fit locations on his layout.

Our March meeting will be at Kalamazoo Model Railroad Club. Looking forward to seeing you there.

Happy modeling

Garry Johnson  
Superintendent NCR Division 9

## **Editor's Comments**

Reminder this month we will be visiting the Kalamazoo Historical Model Railroad Club for a layout tour, followed by a series of instructional clinics presented by Jim Glenn and other members. There will be more information later in this edition of the Yardmaster Newsletter.

Our April 6<sup>th</sup> Board Meeting will be held at Garry Johnson's house starting at 7:00PM. After the actual meeting, we will take a new look at Garry's layout followed by a "bull session" on all things related to model railroading. All Division 9 Members are eligible to attend all board meetings.

As always, we welcome your comments, suggestions, criticisms, photos, articles related to model railroading, maybe even some funny stories.

## **Division 9 Board Members**

| <b>Position</b>            | <b>Board Member</b>           | <b>Email address</b>   |
|----------------------------|-------------------------------|--|
| Superintendent             | <a href="#">Garry Johnson</a> | <a href="mailto:elecsprk@gmail.com">elecsprk@gmail.com</a>                               |
| Assistant Superintendent   | Joel Pyard                    | <a href="mailto:pyardj@comcast.net">pyardj@comcast.net</a>                               |
| Paymaster                  | <a href="#">Bob Lawrence</a>  | <a href="mailto:robertlawrence44@msn.com">robertlawrence44@msn.com</a>                   |
| Scribe & Newsletter Editor | Alan Bau                      | <a href="mailto:alanwbau@gmail.com">alanwbau@gmail.com</a>                               |
| Trustee                    | Doug Van Meter                | <a href="mailto:vanmeterda@gmail.com">vanmeterda@gmail.com</a>                           |
| Trustee                    | Greg Marvin                   | <a href="mailto:sr@earthworkslawnandlandscape.com">sr@earthworkslawnandlandscape.com</a> |
| Website Manager            | Tony Vacha                    | <a href="mailto:CKRHandler@aol.com">CKRHandler@aol.com</a>                               |



## **Upcoming Division Nine Membership Meetings & Events:**

| <b>Meetings &amp; Events</b>                  | <b>Date</b>                        | <b>Location</b>   | <b>Presenter &amp; Topic</b>   |
|---|------------------------------------|---|--|
| Membership Meeting                            | March 15 <sup>th</sup><br>9:30 AM? | Kalamazoo Model<br>RR Club                                    | Clinic with information,<br>training and<br>demonstrations<br>involving model railroad<br>layout building. |
| <b>Board Meeting</b>                          | April 6 <sup>th</sup> - 7:00 PM    | Garry Johnson's   | N/A  |
| Membership Meeting                            | April 19 <sup>th</sup><br>9:30 AM  | Kalamazoo<br>Bridge Club                                      | Presentation by Doug<br>Harding – "Fun with<br>Pickles: a look at the<br>Pickle Industry"                  |
| Membership Meeting                            | May 17 <sup>th</sup>               | Mid-Michigan<br>Railroad Facilities<br>in Turkeyville,<br>Mi. |  |
| Membership Meeting                            | June 21 <sup>st</sup>              | TBD   | TBD  |
| <b>Board Meeting</b>                          | July 6?                            | TBD   | TBD  |
| No Membership<br>Meetings in July &<br>August |                                    |   |  |
| Annual Meeting                                | September 20 <sup>th</sup>         | TBD   | TBD  |
| <b>Board Meeting</b>                          | October 5 <sup>th</sup>            |   |  |
| Membership Meeting                            | October 18 <sup>th</sup>           | TBD   | TBD  |
| Membership Meeting                            | November 15 <sup>TH</sup>          | TBD   | TBD  |
| Membership Meeting                            | TBD                                | TBD   | TBD  |



## **Upcoming Membership Meeting Information**

### **March 15th Membership Meeting – Kalamazoo Model Railroad Historical Society.**

The Club is located at [9336 Riverview Drive Kalamazoo, MI 49004](https://www.google.com/maps/place/9336+Riverview+Drive,+Kalamazoo,+MI+49004/@42.29144,-85.54833,15z).

There will be no business meeting or zoom link for this event.

Links to their website and a map are displayed below.

[Kalamazoo Model Railroad Historical Society 501\(c\)\(3\) – Model train club in Kalamazoo, MI](#)

[Kalamazoo Model Railroad - Google Maps](#)

### **Division 9 Visit to Kalamazoo Model Railroad Historical Society on Saturday March 15, 2025 - Overview**

Welcome to KMRHS. The clinic will start at 10:00. The club will be open at 9:30 to view the layout. The clinic will consist of three parts: How the new layout is being built, how LCC and signaling work, and how operations work using JMRI.



### **April 19<sup>th</sup> Membership Meeting – Kalamazoo Bridge Club**

We will be meeting at the Kalamazoo Bridge Club. After our normal business meeting, there will be a clinic by Doug Harding. The planned clinic topic for the day is "Fun with Pickles: a look at the Pickle Industry".



## **May 17th Membership Meeting – Mid-Michigan Railroad Facilities in Turkeyville, Mi.**



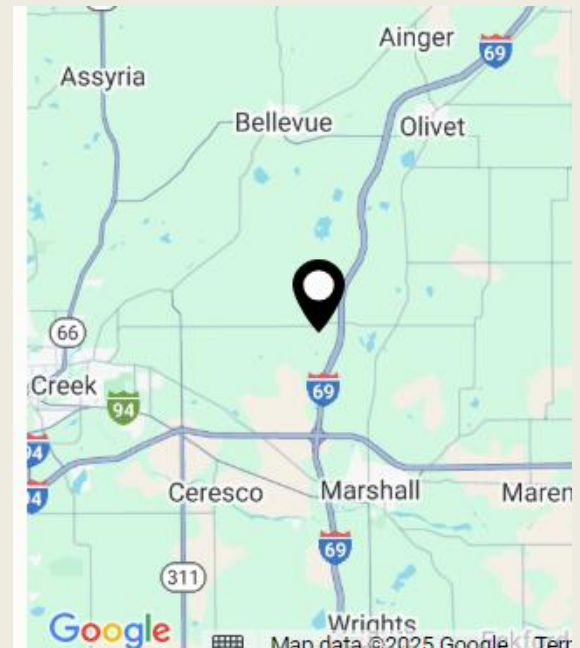
### **The agenda for the day is described below:**

The Mid-Michigan Railroad is a club like many other except their models are considerably larger than a typical O, HO or N scale.

We will actually be able to ride the trains, tour their facilities and train layout. Most likely some of their members will bring their own locomotives and cars. From what we know they have lots of stories that they are more than willing to share with visitors willing to listen. They have a Grand Elk RR caboose which was donated to the club. We expect to learn about the club operations, their size and their future plans. **Members should plan to arrive at 10:00AM**

For more information click on the link below:

[MID MICHIGAN RAILROAD CLUB - Home](#)



## **2025 NMRA National Convention**

### **2025 NMRA National Convention, Novi, MI | National Model Railroad Association**

If you plan to attend or would like information about the 2025 NMRA National Convention in Novi, Mi. to be held from July 14<sup>th</sup> through the 19<sup>th</sup>, click on the link above.



## **Kalamazoo Model Train Show & Sale**



### **Spring Model Train Show & Sale**

**Saturday, Apr 5th, 2025**

**10AM - 3PM**

**Kalamazoo County Expo Center**

**Admission \$5 • Kids 12 & Under Free**

**KMRHS.ORG**

### **Event Description**

Come on out to the spring train show at the Kalamazoo Expo Center on April 5th from 10AM to 3PM. Whether you are adding to your layout, or just starting in the hobby, this is the place to be. Search all of the vendors to find that great deal, or that rare item. With over 150 vendor tables there are many bargains to be found! There will be running layouts to view from local clubs. This is your chance to see the beautiful layouts that these clubs spend many hours crafting. They would be happy to discuss model railroading, and current trends with you. This could be your one stop trip for model railroading supplies, toy trains, railroading memorabilia, and collectibles.

**The link to the Train Show List is displayed below:**

**[The Train Show List - Hobby and Train Event Clearinghouse](#)**



# 2025 Spring Railroad Modelers Meet

Hosted by the Black Swamp Division (Div 1) of the North Central Region (NCR), NMRA



## April 5, 2025 – Sylvania OH

Doors Open 8:00AM with activities into the evening. See website for details!  
Sylvania Senior Center, 7140 W Sylvania Ave, Sylvania, OH 43560

Learn New Skills, Share Your Models, Share Techniques, Visit Layouts



This is an RPM style  
Model Railroading event!  
Lunch options will be available on-site!



This event is open to ALL MODELERS - NMRA Membership is not required

## SCHEDULED ACTIVITIES

**Modeling Clinics** – 9 clinics on 3 tracks to choose from on a mixture of subjects presented by modelers, historians, and industry experts.

**Model Showroom** – Bring your models (finished or in-progress) of locomotives, rolling stock, structures, dioramas, or scenery. All are Welcome! The showroom is about sharing the hobby in all its many forms. Freelance and prototype welcome.

**Layouts and Displays** - Small and modular displays will be available within the main venue.

**Layout Tours** - Layout tours of local layouts will be available during the afternoon and evening.

### Admission is \$20 at the door

17 and under free, all individuals 17 and under must be accompanied by an adult

All event activities (minus lunch) are included in one low price!

This is NOT a swap meet!



Visit our website for more information  
and event schedules  
[smm.ncrnmra.org](http://smm.ncrnmra.org)

Hosted by the Black Swamp Division  
Division 1, NCR NMRA  
[div1.ncrnmra.org](http://div1.ncrnmra.org)





## **Some of my Favorite Websites**

This month we start the first of a new series highlighting some of my favorite websites covering a wide array of topics related to model railroading. If you have any sites that are not included, please send me a link and I will include them in future newsletters.

**Jason Jensen Trains** – Jason Jensen Trains is a popular website for train enthusiasts. He has kits for sale for HO & N Scale and Sci Fi kits, if you are into that kind of thing. His Missions Statement is “Share the love of model railroading with the World”. You can find Jason on the internet by clicking on the above link. I highly recommend Jason’s videos as they are entertaining and highly educational.



## **Contact Us**

Email: [jasonjensentrains@gmail.com](mailto:jasonjensentrains@gmail.com)

Text: 970-616-0944

Mail: PO Box 336873 Greeley, CO 80633

Patreon: [www.patreon.com/jasonjensentrains](http://www.patreon.com/jasonjensentrains)

[\*\*Fos Scale Models - HO Scale Kits\*\*](#) – This is Doug Foscale’s website. He has instructional videos on building “Craftsman Structure Kits”.

This is an exsert from his website describing what he does.

“We have been producing model railroad structure kits since 2002, starting with the release of Big Lou’s Grill. Since then, we have strived to live up to that unique little kit, by offering original, uncommon designs. The kits feature our own laser cut precision parts, and in-house metal cast detail parts, 3D printed parts; along with plastic architectural parts from Tichy and wood from Northeastern Scale Lumber.”



### [\*\*Boulder Creek Railroad\*\*](#)

#### **Build like a Pro**

Learn all the **secret** tips, techniques and skills to take your model building to the **next level**

Hi I'm Elle, a transgender model builder from Australia, many of you will know me as Luke from my older videos. In 2024 I started transitioning and I'm now referred to as Elle 🌈 🛠️. My goal is to provide you with the absolute best tutorials on building realistic scenery dioramas and model railroad details showing you that anything is possible



🤖 Whether you're a total beginner or a seasoned professional you will surely find some useful tips and advice here. Don't be afraid to jump in the deep end and have a go at building your own scenery dioramas and models because if you're anything like me you'll surprise yourself at how easy it is to make some great looking and very realistic models. Thanks for stopping by, Cheers Elle 😊

### [\*\*NMRA Michiana Division Main Page\*\*](#)

This link is from our friends from the Michiana Division. There are close to 200 videos covering a wide array of topics by many different model railroaders. Some of the presenter names that you may be familiar with include our own Joel Pyard, Maynard Mitchell, Clark Propst, Ron Christensen, Doug Harding & Greg Bueltmann along with many others.

## **February Membership Meeting Notes:** prepared by Greg Marvin

Garry Jonhson opened the business meeting at 9:55am. He shared a product with us that he has used with good success. Kester Flux. He then shared with the group about last months meeting with the Grand Elk gentleman. We are thinking about having him back again sometime.

Joel had no new report this month.

Paymaster Bob: \$42 collected in 50/50. January checkbook balance \$1102.72. He shared that he a journal that Bruce Nicols started and he continues to use. Shared that anyone was welcome to look at it anytime.

Rich Mahaney report: Next Month meet at Kalamazoo Model RR Club. April meeting to be Doug Harding talking about Pickles. May will be Mid-Michigan group out by Turkeyville. June is still open but he is trying to arrange some layout tours.

July is Novi National Convention. 400 registrations to date. They expect 1000. No meeting in July & August. September annual meeting- maybe Vicksburg.

**Dan Lewis MMR: Zoom presentation.** Rich provided us with his Bio and introduction. Dan's presentation was very thorough and interesting. He started his talk out with basic DPM buildings and how adding accessories to them can make a big difference. He then moved into how to add sections, better detailing of roof sections, paint and weathering techniques. Very interesting how he would take magazine ads, sand them down paper thin and then apply them to his buildings.

He had many informative slides to share and great ideas. The end of his presentation showed many of the finished models he has on his layout. And the fact that all his modeling was done in N scale! He is an excellent modeler. The group had many questions and comments for him. A lot of guys were inspired by this presentation and said it had motivated them to want to do more with their modeling! Dan Lewis will have a layout tour July 15 during the Novi convention. Meeting adjourned at 11:40am.

My thanks to Greg Marvin for preparing the above in my absence, as I was unable to attend the February Membership Meeting.

Greg Marvin



## Dan Lewis Presentation on DPM Kits

Dan Lewis was kind enough to provide us with his slide presentation on "Getting the Most out of the Design Preservation Model Kits". If you want access to these slides all you need to do is click on the following link:

[Slide 1](#)

The meeting was held on Saturday February 15<sup>th</sup> at the Kalamazoo Bridge Club.



Attending from Division 9 are displayed below:

Greg Marvin, Bob Lawrence, Garry Johnson, Rich Mahaney, Joel Pyard, Bill Lauritsen, Robert Kline, Frank Zajek, Tony Vacha, Merrick Wilson, Bob Provot, Rick Garthe, Jim Glenn  
Zoom Attendee: Dave Vinci

## **Rich's Travels**

Here is a short/small hazmat train - one tank car. UN 1090 - acetone. Tank car was picked up from the Sherman Williams plant as part of a full/empty tank car exchange. CSX was taking the tank car back to the Wavely Yard in Holland. Yup, no buffer car.



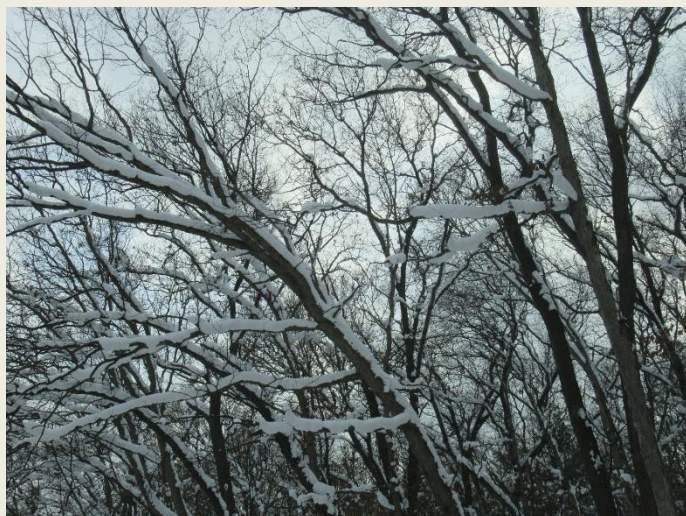


## Two Snow Scenes in Kalamazoo





There have been plenty of opportunities to get some great photos of snow covered trees this winter. The following are a few that Rich took on his travels throughout Southwestern Michigan.









**Here are some interesting ideas for winter scenes to add to your layout from Rich Mahaney**













## **Photos from Garry Johnson**

Photo of Grand Elk train/engines. Located east end of Gearhart yard in front of Balkama's limestone yard car emptying pit. Also, unusual to see a tank car behind the engines of a road freight. Maybe Rich might have an answer.

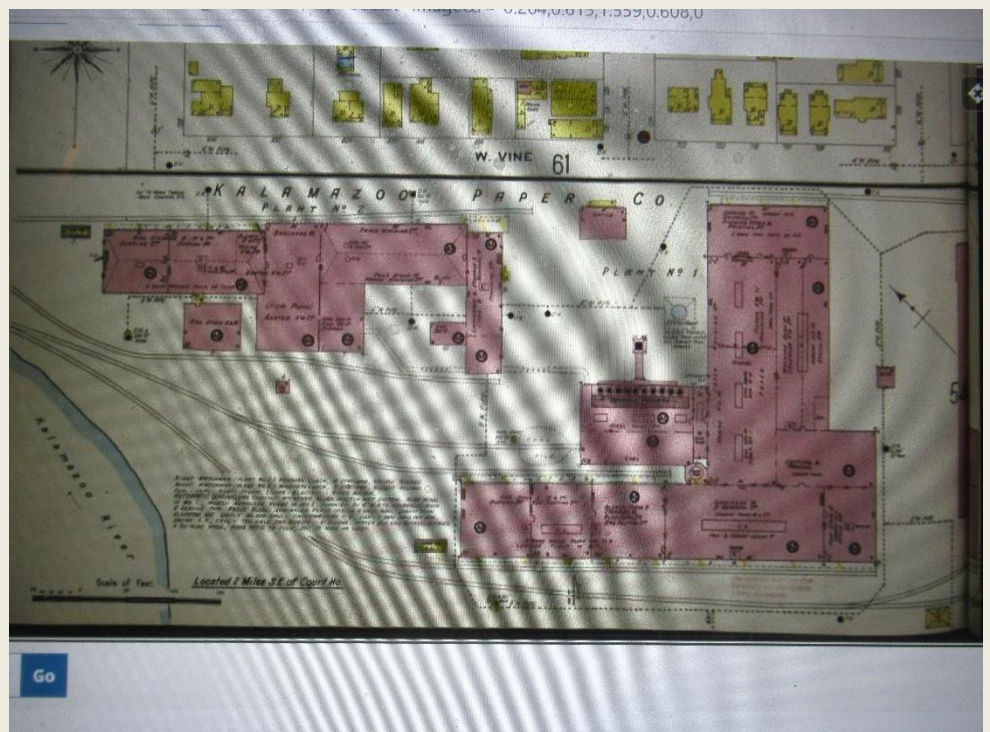
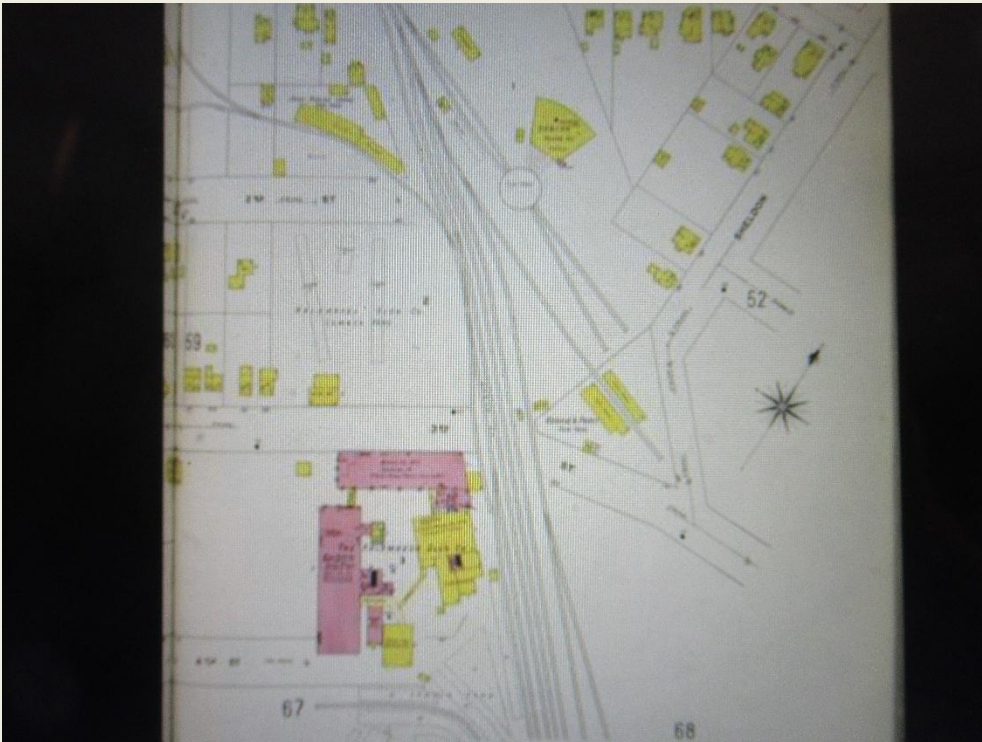
Also, saw a CN engine painted in Grey with color trim. I was headed east train was headed west no chance to get details.



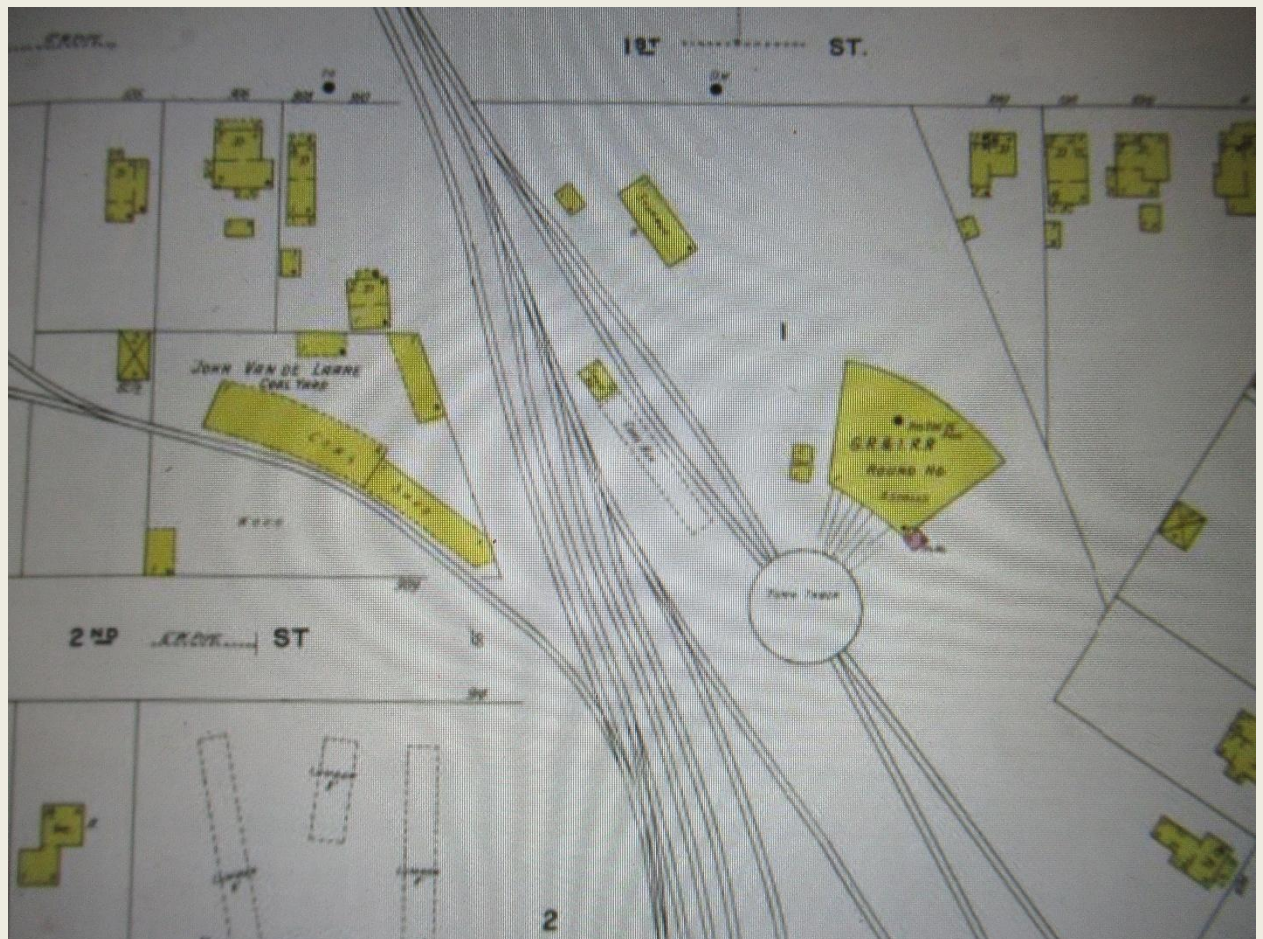
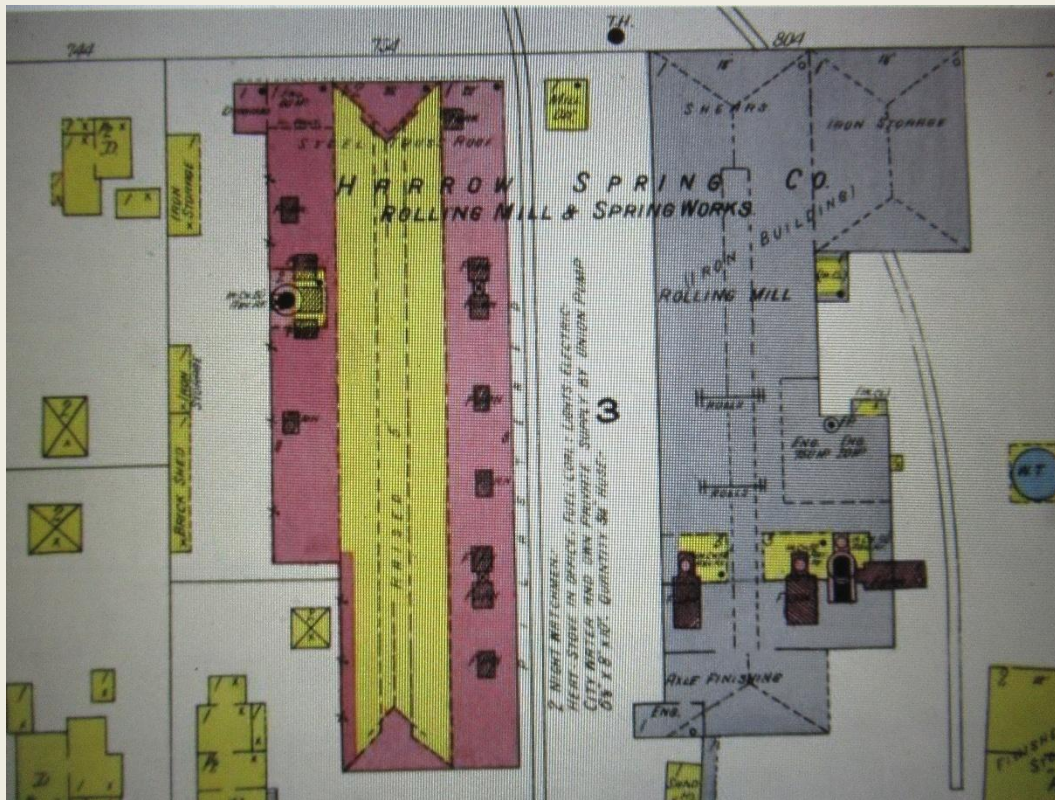


### **Sanborn Maps – Kalamazoo, Mi. Part 3**

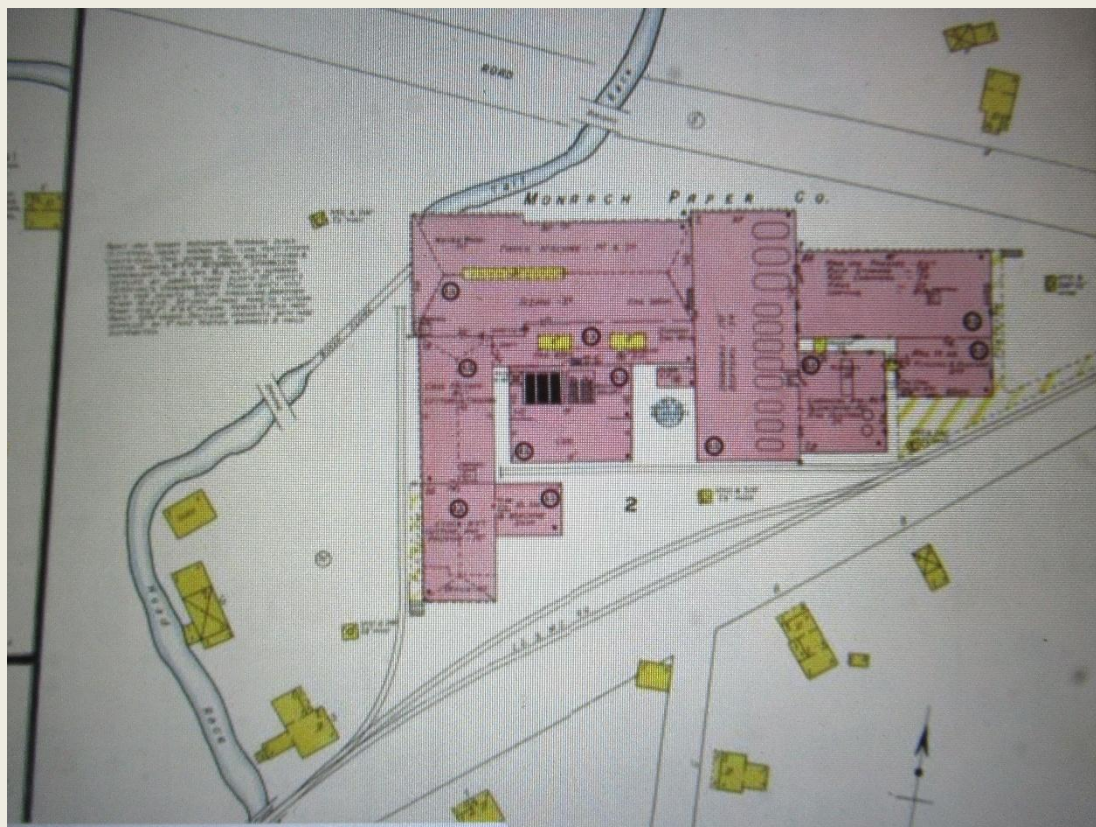
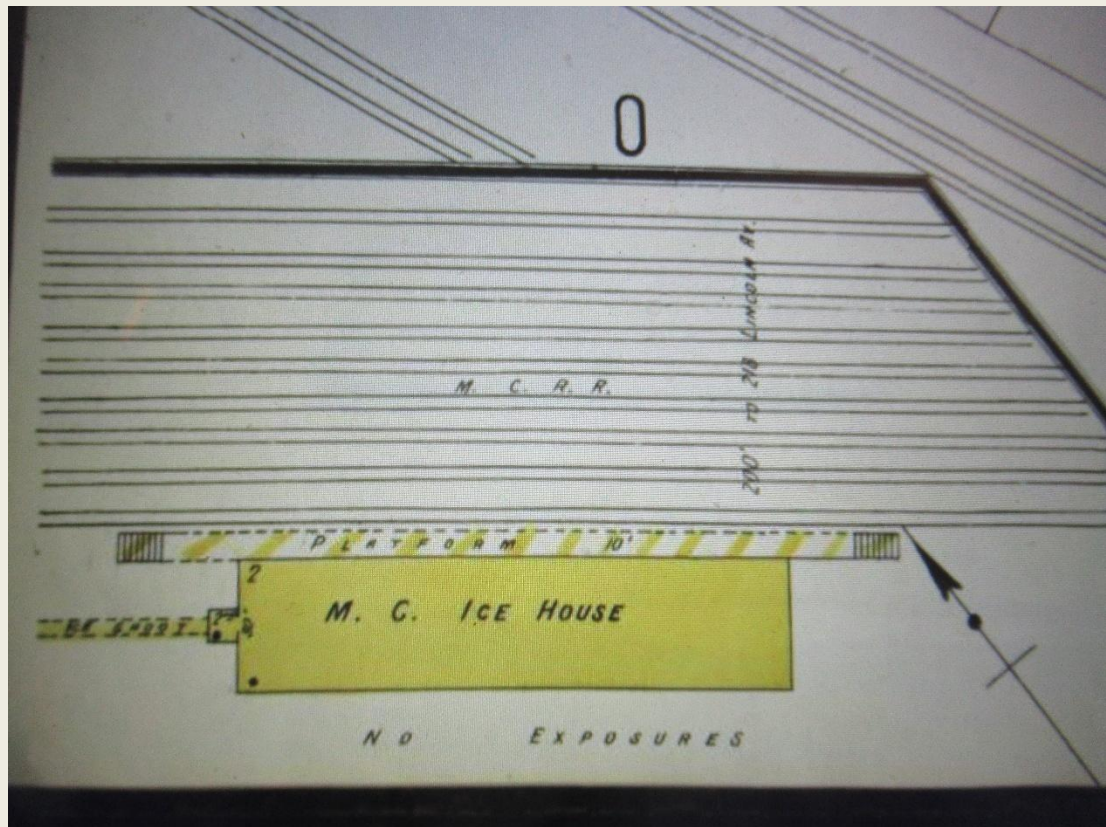
Rich Mahaney has photographed 34 Sanborn Maps of the Greater Kalamazoo area. Since these maps are quite detailed and, in many cases, somewhat difficult to read, it is planned to include a few maps in this and the next couple of issues.



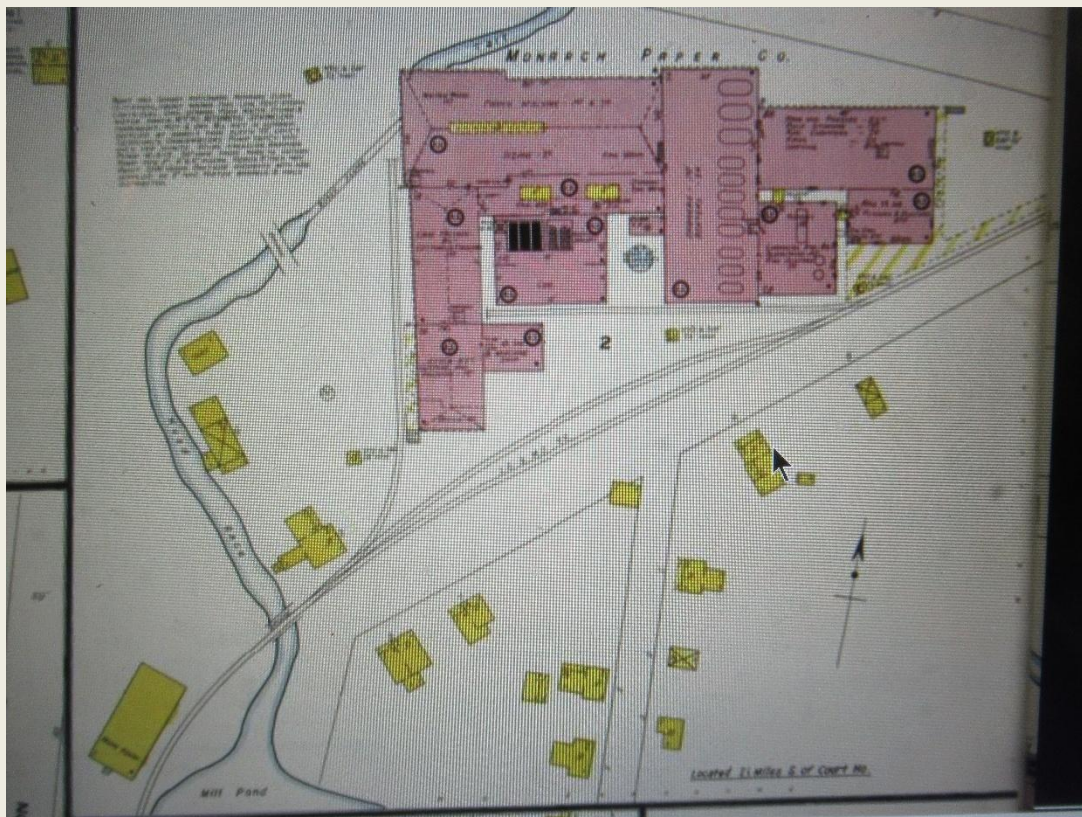
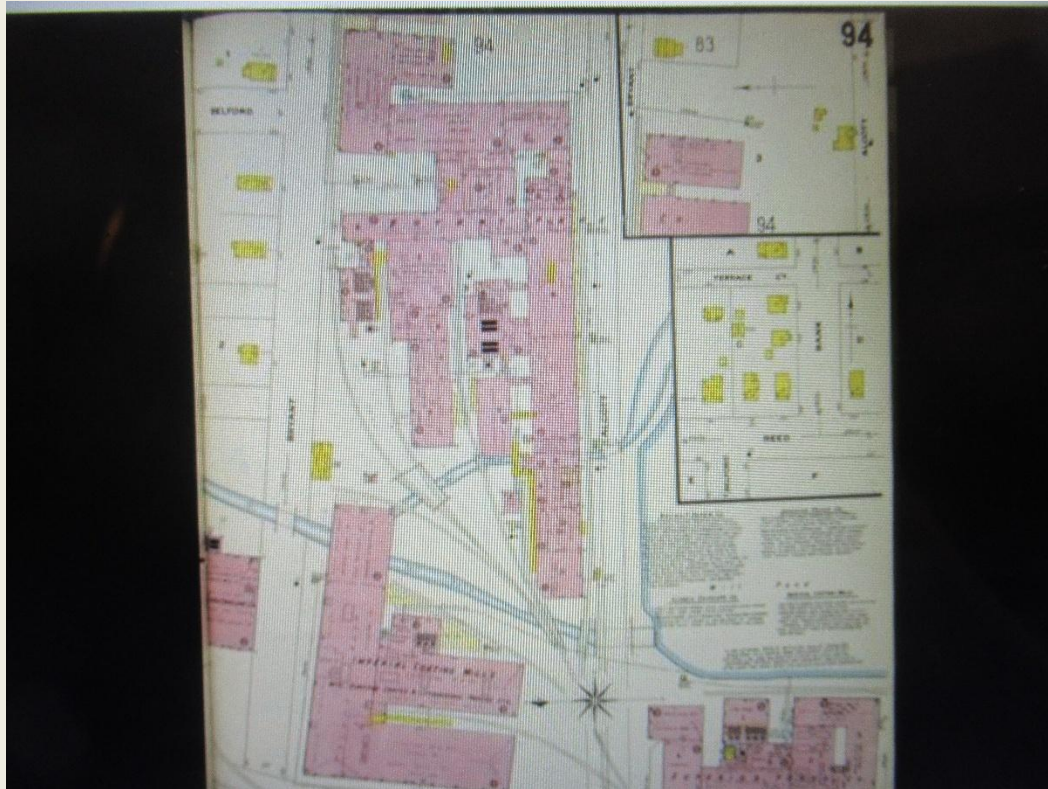




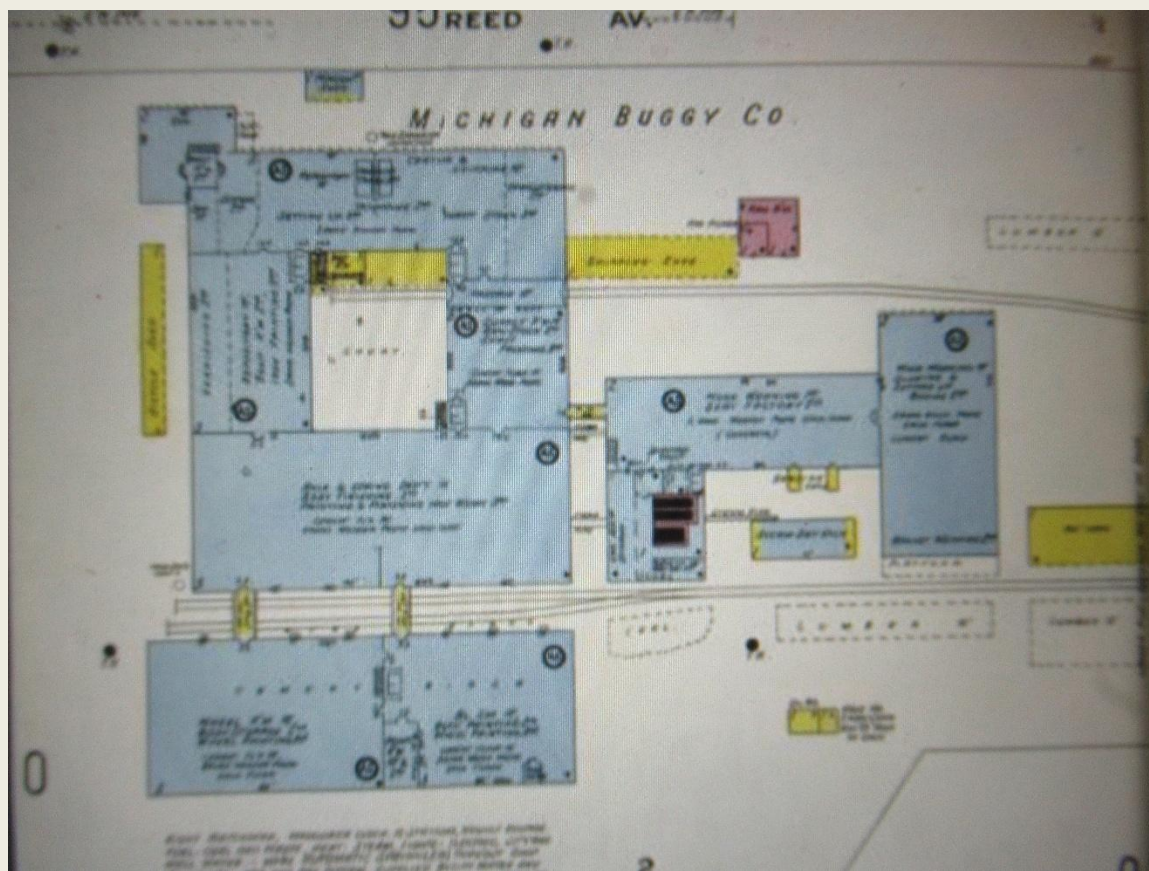
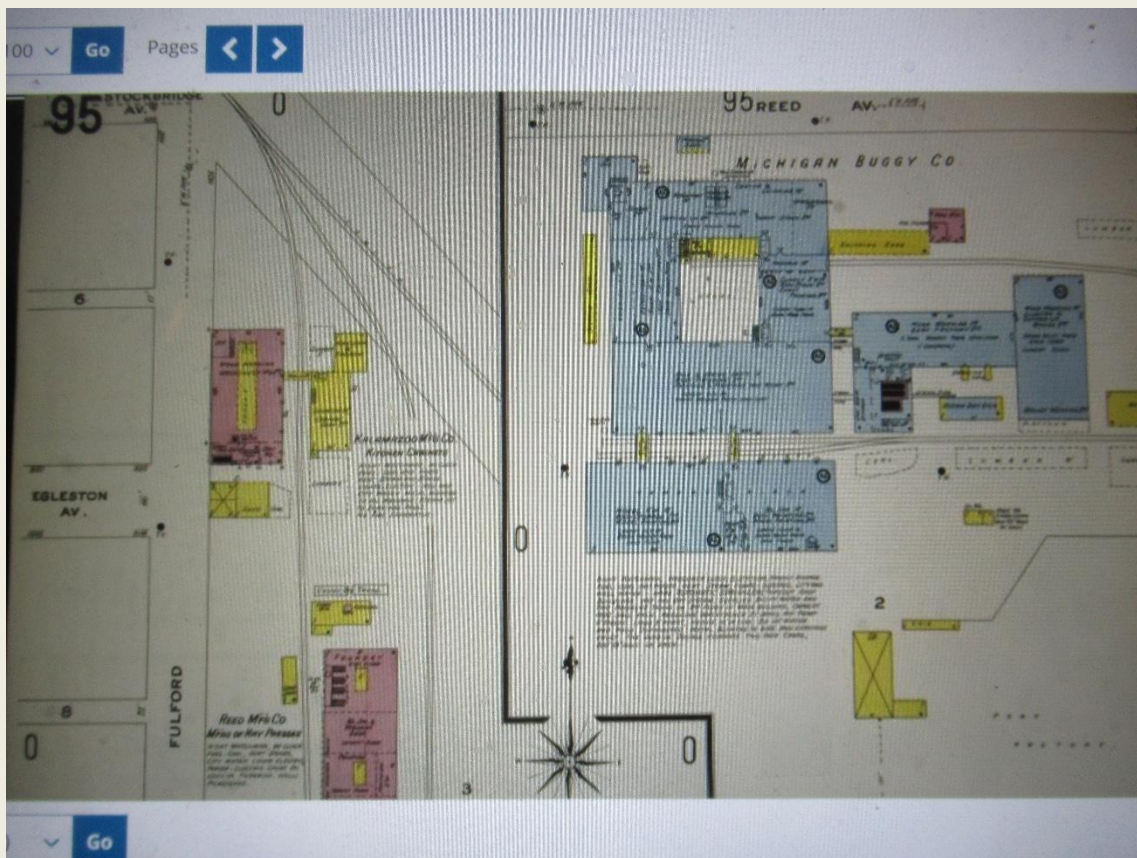












The photo to the right concludes our series of Sanborn Maps. Hope you found these useful in your modeling endeavors.

Thanks to Rich Mahaney for taking these photos.

## **For Sale Items**

Do you have an excess inventory of cars, supplies, etc. which are just taking up space and most likely will never be used? You can list these items here and try to sell them, so you can buy more train stuff.

To list your for-sale items here, send your list of items along with a picture if one is available, a description of your item(s) along with your asking price and contact information. Send your information to [alanwbau@gmail.com](mailto:alanwbau@gmail.com).

## **Free Wood Cutoffs & Styrofoam**

Hey everybody, I am in the process of cleaning out my workshop and I have an excess supply of white Styrofoam and wood cutoffs of various sizes and varieties of wood. If anyone has a need for either of these, they are yours for free, all you need to do is pick them up. Please contact Alan Bau if you have any questions or want to set up a time to pick them up. (269) 501-8999. [alanwbau@gmail.com](mailto:alanwbau@gmail.com)





## **Reader's Comments**

I received the following note from Division 9 Member Bill Lauritsen, which I found interesting and included in this issue of the Yardmaster. This got me to thinking this could be a good way to get members more involved, so I thought we would try a new column titled **Reader's Comments**.

### **The following article was written by Division 9 Member Bill Lauritsen.**

In 1969, a music group called "The Band" released their second record album. The fifth track was a song called Up On Cripple Creek and it charted immediately and rose to a top 25 hit for them.

Why do I draw your attention to this? Because Menards has been releasing buildings and vehicles for the last two years with Cripple Creek as the logo. It comes in both O gauge and HO gauge in already built form and together they make a really nice grouping of buildings for a small town or way stop on a layout. You can also retitle the buildings to suit your needs. The cost is usually less than a comparable Walters prebuilt unit and not much more than a kit. On my Michigan Central layout I have them as a way stop and have them mounted on interchangeable platforms so each time I have visitors they have a little different look to that location. Still working on detailing each platform.

NOTE: There really is a place called Cripple Creek in the United States! I was surprised to find it when I checked as I thought it was a made-up name. I am guessing that a Menards, family member liked this song as a youngster and it stuck with them, so when it came time to name this group out came that title. These units can be special ordered and come in about a week. If interested check in at the hardware or building supply desk and the clerk there can help you find what you want or go to the Menards web site to investigate and order directly.

PLEASE note there is a small handling fee if sent to the store, it is more to have it sent directly to your house. Happy railroading!

## **NMRA Achievement Program**

Do you have any interest in the NMRA-NCR Achievement Program. If you want more information or have any specific questions, contact our Division 9 Achievement Program Coordinator - Dorman Wilson [N8YNW@Charter.net](mailto:N8YNW@Charter.net).



## **Wrap-up**

Thanks to Dan Lewis for allowing Division 9 to publish his entire DPM Presentation on our website. The link to this presentation is displayed on page 11 and repeated here if you missed it. [Slide 1](#) There are a total of 56 slides, way too many to include in the newsletter.

This issue of the Yardmaster includes two new sections which I hope will become regular features in our Division 9 Newsletter. Our first contributor to "Reader Comments" is Bill Lauritsen who wrote an article about an offering from Menards offering "Cripple Creek" models. The other new section is titled "My Favorite Websites", which is a brief overview of some of my favorite model railroad websites. Feel free to give me your Favorite Websites, which will be included in future issues.

The link to the train show list is displayed at the bottom of page 6 immediately below the flyer for the Kalamazoo Model Railroad Historical Society. It is also included on our website. <https://div9.ncrnmra.org>.

Thanks to all those that contributed to this month's newsletter.

Alan Bau  
Divisions 9 Scribe & Newsletter Editor  
[alanwbau@gmail.com](mailto:alanwbau@gmail.com)