



The Yardmaster

Southwestern Michigan Division



February 2025

Website: www.ncr-div9.com



This photo is the Pere Marquette Steam Engine # 1225, from the Steam Railroading Institute.

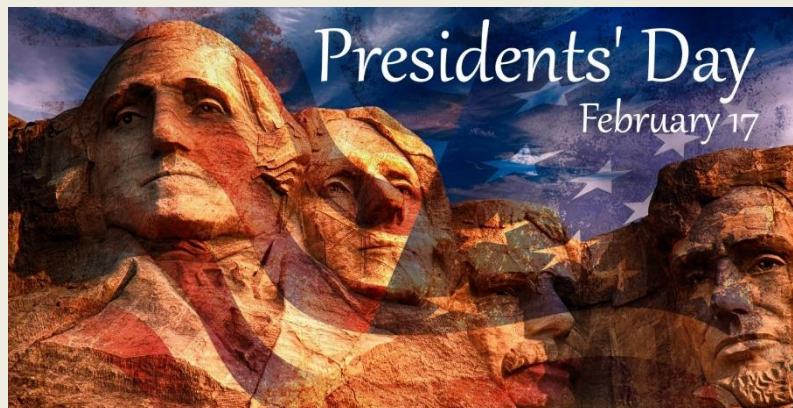
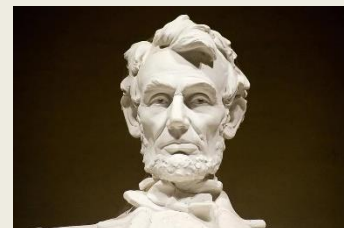
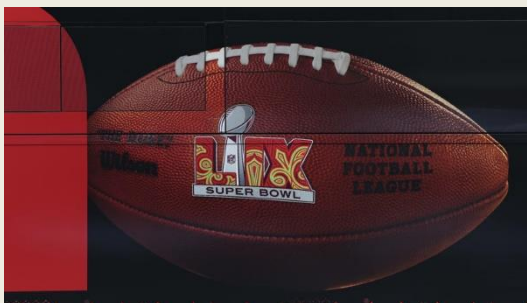
Featured Articles this Month:

Pages

- | | |
|--------------------------------------|--------|
| • Editor Comments | 2 |
| • Board Members Contact Info. | 2 |
| • Div. 9 Board Happenings | 2 |
| • Dan Lewis MMR Clinic Preview | 4-6 |
| • DPM Structures | 7-13 |
| • Upcoming Events | 3 & 14 |
| • Link to NMRA National in Novi, Mi. | 15 |
| • Grand Elk Presentation Recap | 16-17 |
| • Rich's Travel | 18-25 |
| • Sanborn Maps – Kalamazoo | 26-28 |
| • Reader Comments | 29 |
| • NMRA Achievement Program | 30 |
| • Wrap-up | 30 |

Non-Train Related Holidays & Special Events – February 2025

Ground Hog's Day	2/2
Super Bowl Game	2/2
Lincoln's Birthday	2/12
Valentine Day	2/14
President's Day	2/17



Editor's Comments

Next month I will be adding a list of our favorite model railroading links. If you have any that you really like, please share them with our membership and then to me and I will add them to the list.

I don't want to sound like a broken record, but we would really appreciate your comments, suggestions, criticisms, instructional articles related to Model Railroading or anything train related.

Division 9 Board Happenings

The next Division 9 Board Meeting is scheduled for Sunday April 6th @ 7:00 PM.

- The board is actively involved in creating the new website. The new link is www.div.ncrnmra.org. This link is active, but bear in mind this is still a work in progress.
- We are reviewing possible alternatives to using zoom. Watch for more details as they become available.
- We are also working on a few bylaw changes. It is our hope to get the board's approval and then submit to the general membership for review and approval.



Membership Status: The latest membership report indicates that 7 members have not renewed their membership in the NMRA. We hope this is just an oversight which will be handled soon.

The good news is we have added one new member.



Division 9 Officers

Position	Board Member	Email address
Superintendent	Garry Johnson	elecsprk@gmail.com
Assistant Superintendent	Joel Pyard	pyardj@comcast.net
Paymaster	Bob Lawrence	robertlawrence44@msn.com
Scribe & Newsletter Editor	Alan Bau	alanwbau@gmail.com
Trustee	Doug Van Meter	vanmeterda@gmail.com
Trustee	Greg Marvin	sr@earthworkslawnandlandscape.com
Website Manager	Tony Vacha	CKRHandler@aol.com

Upcoming Division Nine Membership Meetings & Events:

Meetings & Events	Date	Location	Presenter & Topic
Membership Meeting	February 15 th 9:30 AM	Kalamazoo Bridge Club	MMR Dan Lewis - "Getting the Most Out of DPM Kits"
Membership Meeting	March 15 th 9:30 AM?	Kalamazoo Model RR Club	Clinic with information, training and demonstrations involving model railroad layout building.
Board Meeting	April 6 th - 7:00 PM	Garry Johnson's	N/A
Membership Meeting	April 19 th 9:30 AM	Kalamazoo Bridge Club	Presentation by Doug Harding – "Fun with Pickles: a look at the Pickle Industry"
Membership Meeting	May 17 th	Mid-Michigan Railroad Facilities in Turkeyville, Mi.	
Membership Meeting	June 21 st	TBD	TBD
Board Meeting	July 6?	TBD	TBD
No Membership Meetings in July & August			
Annual Meeting	September 20 th	TBD	TBD
Board Meeting	October 5 th		
Membership Meeting	October 18 th	TBD	TBD
Membership Meeting	November 15 TH	TBD	TBD
Membership Meeting	TBD	TBD	TBD

Upcoming Membership Meeting Information

February 15th –We will be meeting at the Kalamazoo Bridge Club. After our normal business meeting, there will be a presentation by MMR Dan Lewis on “Getting the Most Out of Your DPM Kits”. We will have a zoom link available for anyone unable to attend in-person. There is more information available in the Yardmaster November edition.

Dan Lewis MMR - Biography

My interest in trains did not begin in childhood, but rather, after I was teaching college. I started in HO but discovered I didn't have room in my small faculty apartment, so I switched to N scale. For many years, my layout was a modest set of shelves at one end of my living room, but in 2001, I was able to purchase a home with a basement, enabling me to expand my layout considerably. I enjoy nearly all features of the hobby, though I confess I enjoy electrical and computer stuff the least—but I tolerate these in order to do what I like most, which is model building, scenery, and operations.



And here is a short overview of the clinic "DPM: Getting the Most out of the Design Preservation Model Kits" I'll present:

From the enhancement of basic DPM kits to sophisticated kit-bashing, this clinic will address paints, textures, signage, and finishing and weathering techniques. Special attention will be given to the proper planning and execution of cutting up a kit and making into something quite distinct. While I model in N scale, this clinic is appropriate for any scale.

Here are a few samples of Dan's Kitbashing work.





Here are some examples of Kitbashing DPM structures from layouts that we have visited over the past year or two.

Bruce Chubb's Layout page 1 of 2

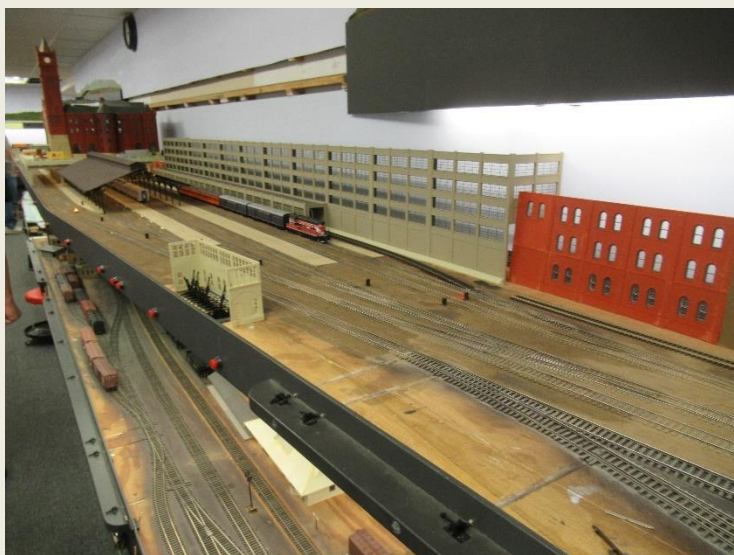


Bruce Chubb's Layout Page 2 of 2



Andy Keeney's Layout Page 1 of 2

Notice the size of these structures



Andy Keeney's Layout Page 2 of 2

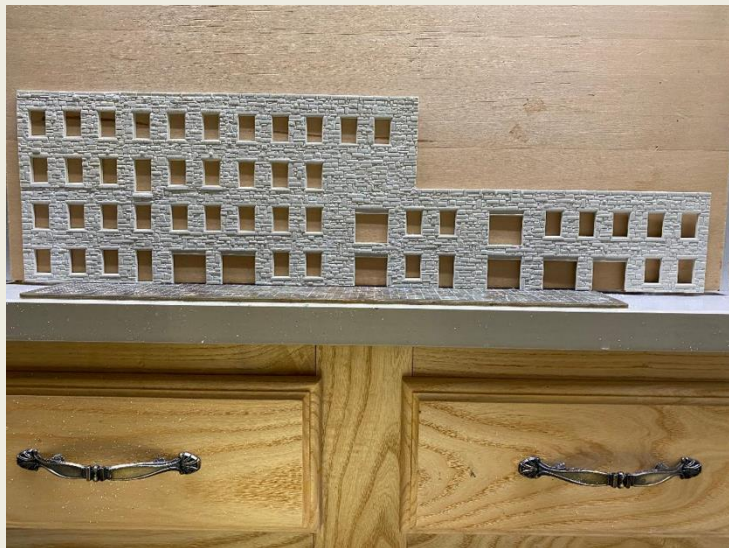


The photos on the next three pages are DPM structures from Maynard Mitchell's layout.

This is the additional building that Maynard is adding to finish off the two buildings that make up the Hamilton Brothers Cannery. This second building is still under construction at this time.



DPM Structures on Maynard Mitchell's Layout Page 2 of 2



Rich, I don't know if you have any of these other photos of my Hawthorne Paper Co. This photo shows how I started laying out the panels for the activities I had in mind for the paper co. I am laying them on a solid Styrofoam core, its very light, very rigid, it will not warp, bend and can easily be lifted from the layout to be worked on. The Styrofoam lets you handle the building and gives a rigid surface to work on while the building is being held on your lap or the workbench. The Hawthorne Paper Co. is built in three sections which butt up against each other.



Here the main building is mocked up and all the panels are glued together. The panels are held against the Styrofoam in sections, using double sided tape. Having the building removable and easy to handle, it lets you place it on the layout and then 'fit' other components up against it.



Making the panels and buildings movable lets you of some final fitting of details,



Here is the final mockup of the paper co. This section is eight feet long and eventually the paper co, will run another four feet down the wall to the right, 90 degrees

With the panels glued together and stuck to the Styrofoam core with tape, you can now place other parts against it, allowing you to start laying track and anchoring the track in place. At this point the building can still be lifted straight up and off the layout. Running a few trains lets you know that the track work is in perfect condition for operation. There is a series of photos laying on the roof of the building, they are taped together and are used for inspiration.



March 15th Membership Meeting – Kalamazoo Historical Model Railroad Club

The Club is located at [9336 Riverview Drive Kalamazoo, MI 49004](#).

There will be no business meeting or zoom link for this event. Details of this session are still being worked out, the preliminary plan is that this meeting will focus on track issues, electrical wiring and signaling, with presentations by members of Division 9 and the Kalamazoo Historical Model Railroad Club.

Links to their website and a map are displayed below.

[Kalamazoo Model Railroad Historical Society 501\(c\)\(3\) – Model train club in Kalamazoo, MI](#)

[Kalamazoo Model Railroad - Google Maps](#)

April 19th Membership Meeting – Kalamazoo Bridge Club

We will be meeting at the Kalamazoo Bridge Club. After our normal business meeting, there will be a clinic by Doug Harding. The planned clinic topic for the day is “Fun with Pickles: a look at the Pickle Industry”.

May 17th Membership Meeting – Mid-Michigan Railroad Facilities in Turkeyville, Mi.

Watch for more details in future issues.

Upcoming Train Shows

Train Show List

The full list of shows is available here on the brand new website, which allows you to subscribe and submit your events directly. More features will be coming soon!

<https://www.trainshowlist.com>

Given that we are reaching almost 1000 subscribers every other week, please consider making a donation as part of your event's marketing budget. Please visit the Train Show List site and donate via PayPal. Thank you for your support!



2025 NMRA National Convention

[2025 NMRA National Convention, Novi, MI | National Model Railroad Association](#)

If you plan to attend or would like information about the 2025 NMRA National Convention in Novi, Mi. to be held from July 14th through the 19th, click on the link above.

Grand Elk Railroad Presentation Recap

By Rich Mahaney

Ryan Yanez

At our January Division 9 meeting we had Ryan Yanez, General Manager of the Grand Elk Railroad, based in Kalamazoo, MI. We had a great turnout of people that came out to hear Ryan's 90-minute presentation from Division 9 and from the Michiana Division. Ryan shared information on the Grand

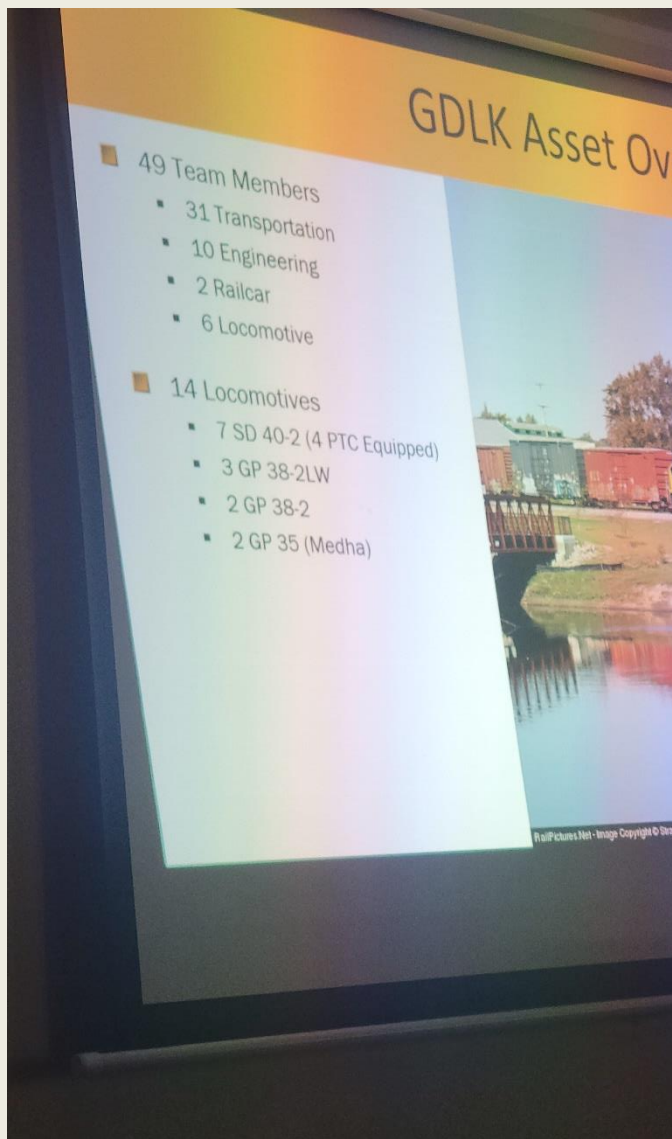


Elk Railroad and its operations in Michigan. Their tracks run from their yard Grand Rapids, through Kalamazoo, Three Rivers and all of the way to Elkhart, IN. Ryan talked about their locomotive fleet and other equipment, train operations, some of their customers and their connections to other railroads for interchange. Ryan also told us about their new railroad ownership in the Upper Peninsula. Watch out for their engines at Trout Lake and west of there in the upper peninsula. Ryan also talked about the possibility of relocating the Kalamazoo yard to another location to help their railroad traffic and road crossings in Kalamazoo. Ryan answered questions from those in attendance for more than hour after his formal slide show presentation. We are considering asking Ryan to come back and talk to us next year on a topic involving railroad operations and the actions that a crew must do before leaving on a train trip.

Rich

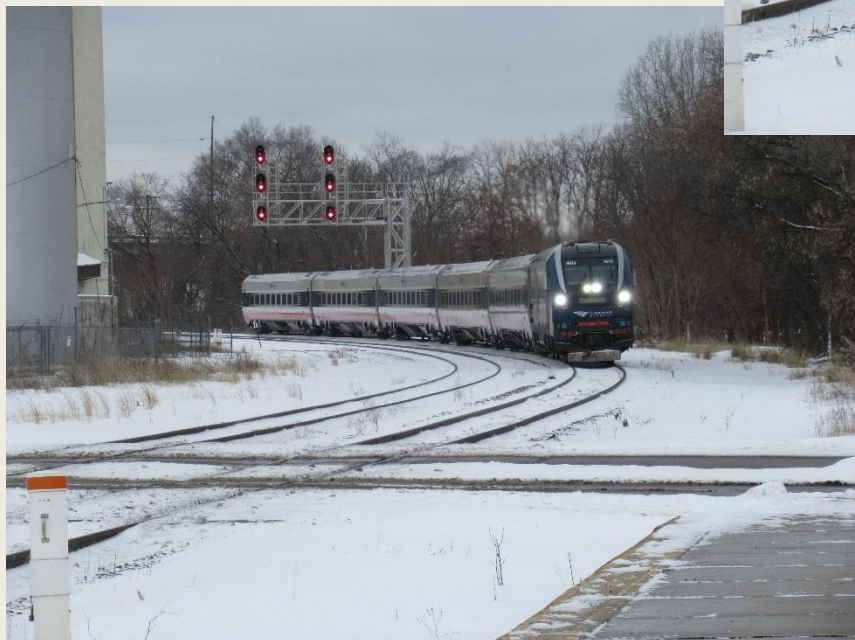


Anybody looking for a job?



Rich's Travels

East bound Amtrak at lunch time, stopping in Battle Creek.





More Amtrak Trains





Still More Amtrak





West bound CN freight train with an IC logo engine, flat cars of wood (probably heading to Los Angeles for home rebuilds), covered hoppers and a lonely tank car at the end (filled with chlorine).





Here is an interesting photo of the Grand Rapids Yard.

Empty coal cars in a train heading back to WY from the JH Campbell Power Plant north of Holland, north of Michigan City, IN



newer style steel coil car and gondola with a frame to hold track/turnout



South Shore Line in Michigan City, IN engine



South Shore Line in Michigan City, IN caboose

New Buffalo Railroad Museum

New Buffalo, MI Railroad Museum with the old Pere Marquette coaling tower. I was thinking this coaling tower was being torn down in Sept 2025, but it is the coaling tower in Michigan City, IN. So just south of here on the Amtrak tracks from Kalamazoo to Chicago.





3 tank cars to enjoy and study. Lots of things I could talk about, if I was using these tank cars in a hazmat or railroad tank car class.

DOT111A100W1 - Sodium Hydroxide Solution - UN 1824, general service/low pressure tank car

DOT111A100W1 - Sodium Hydroxide Solution - UN 1824, general service/low pressure tank car



DOT105J600 - Chlorine - UN 1017, pressure tank car

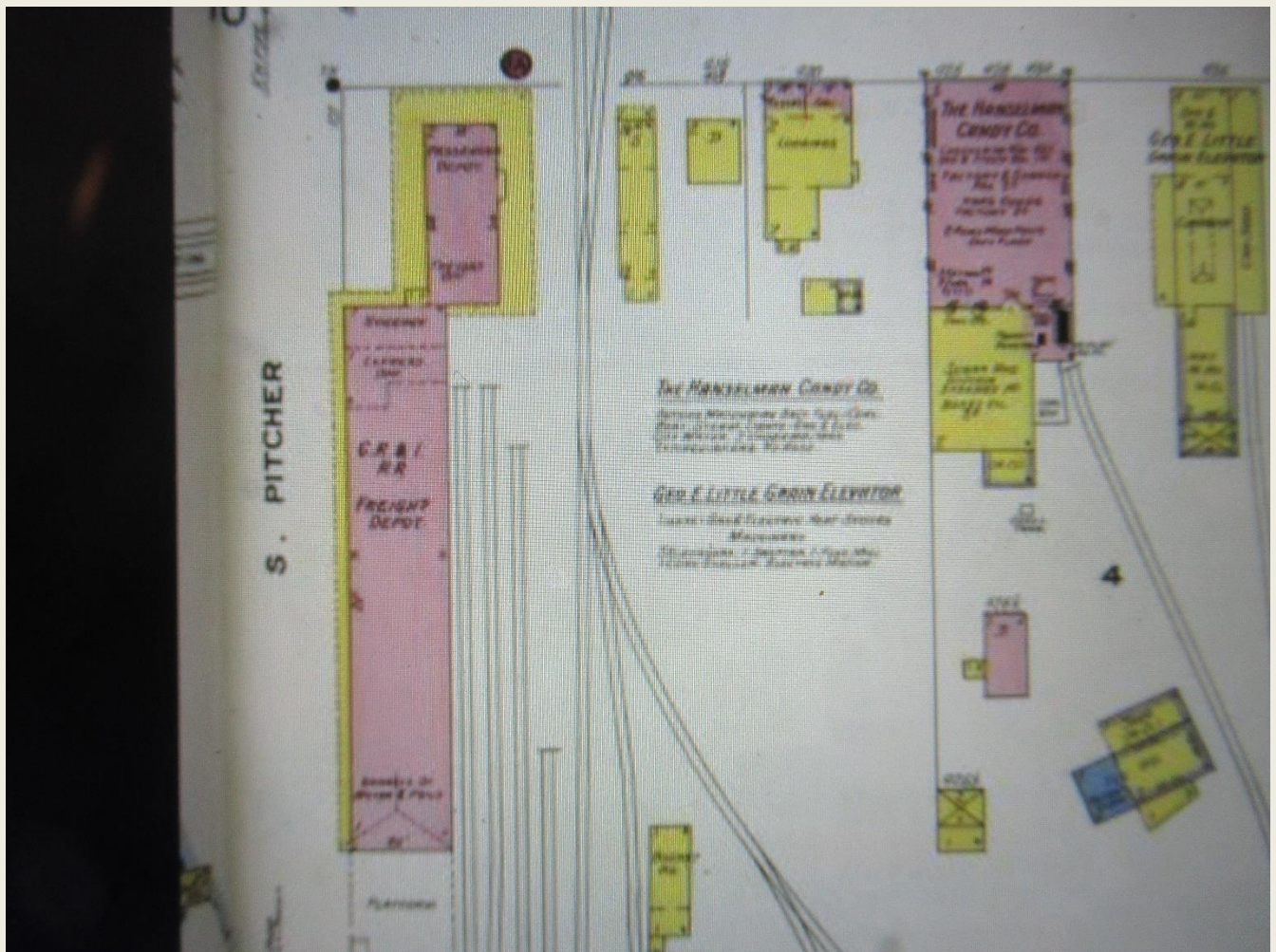
Lots of interesting writings, signage and markings on the cars.

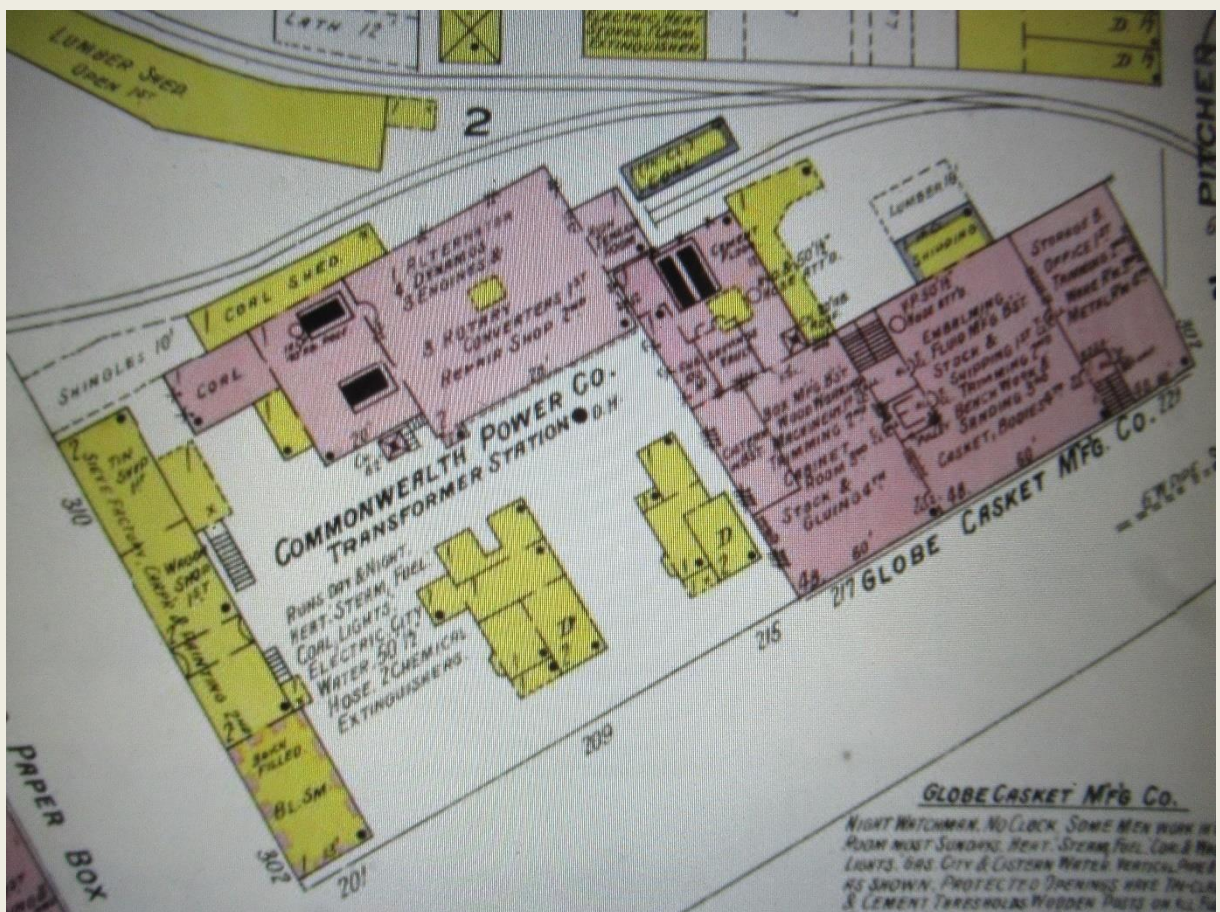
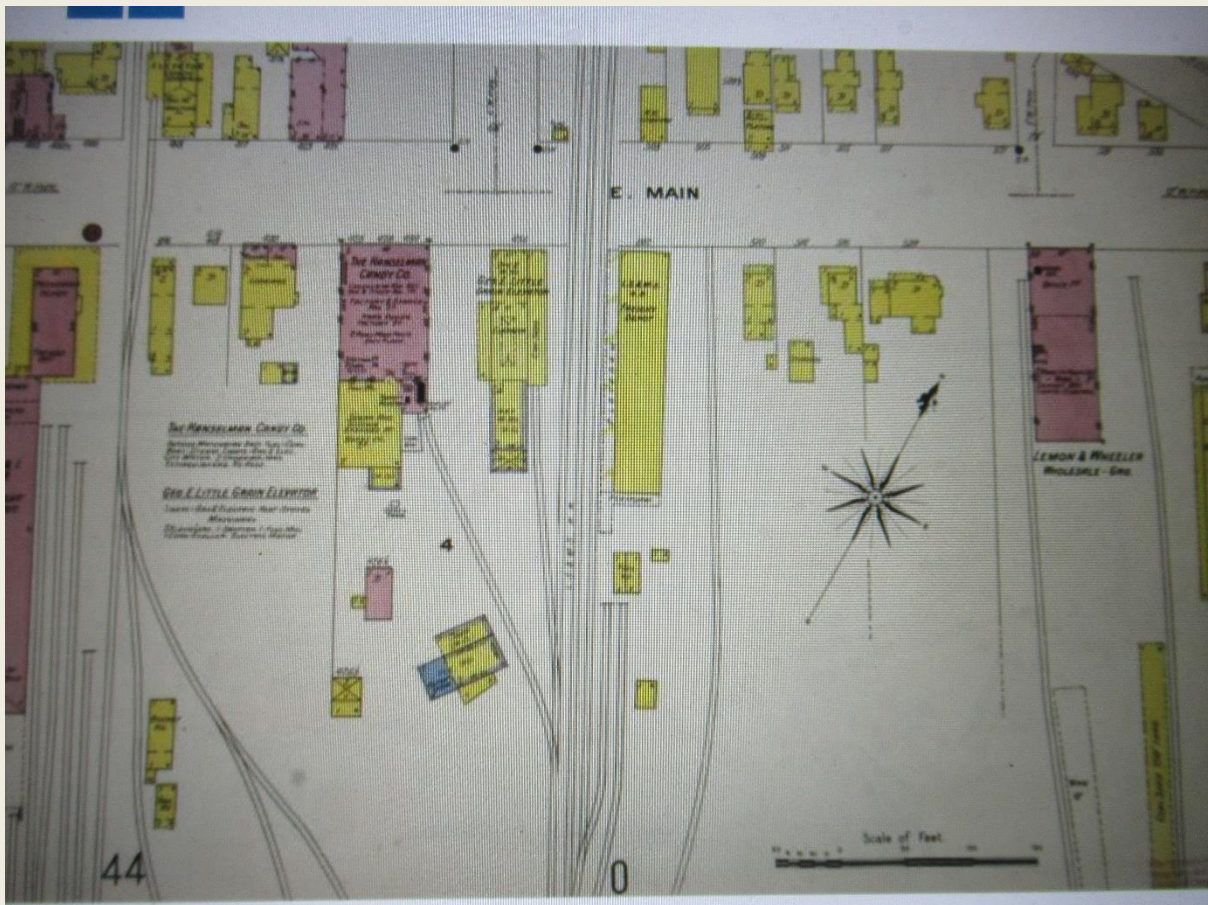
Rich Mahaney

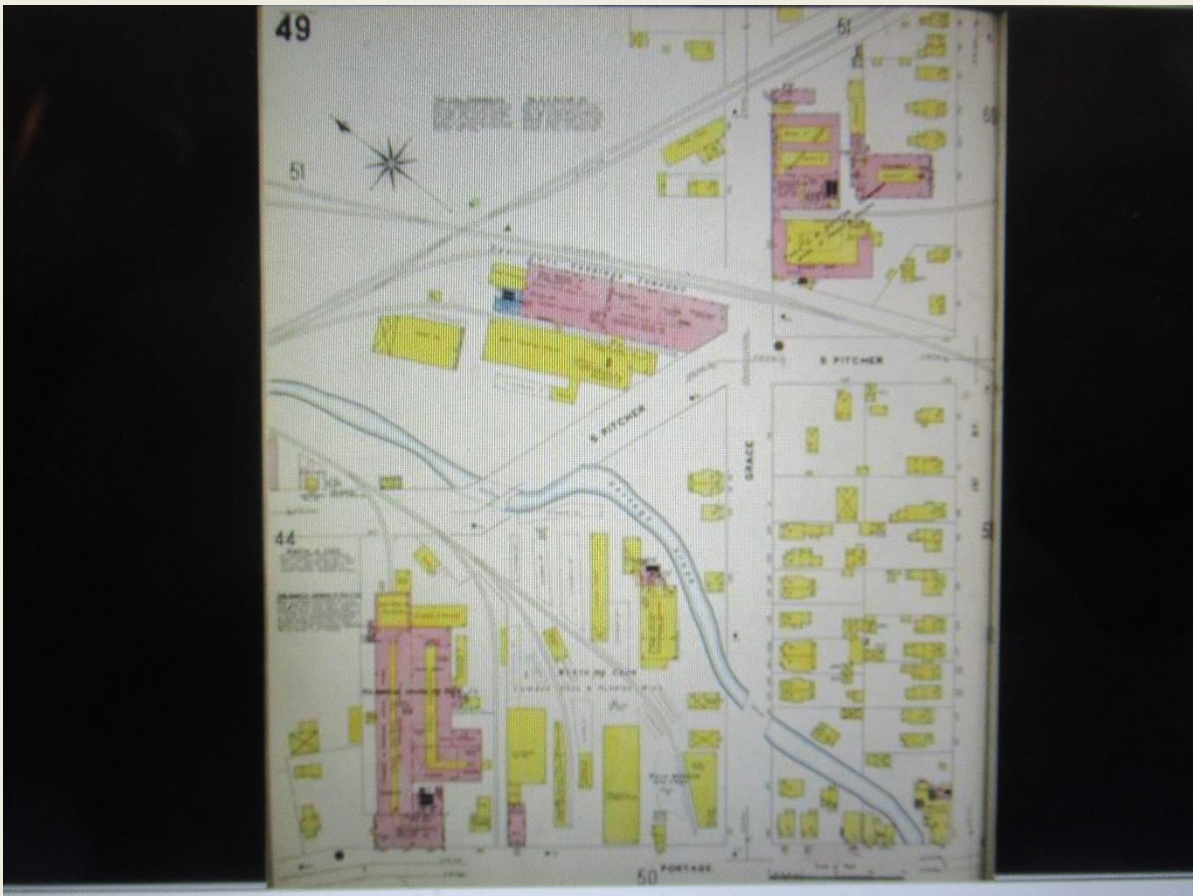
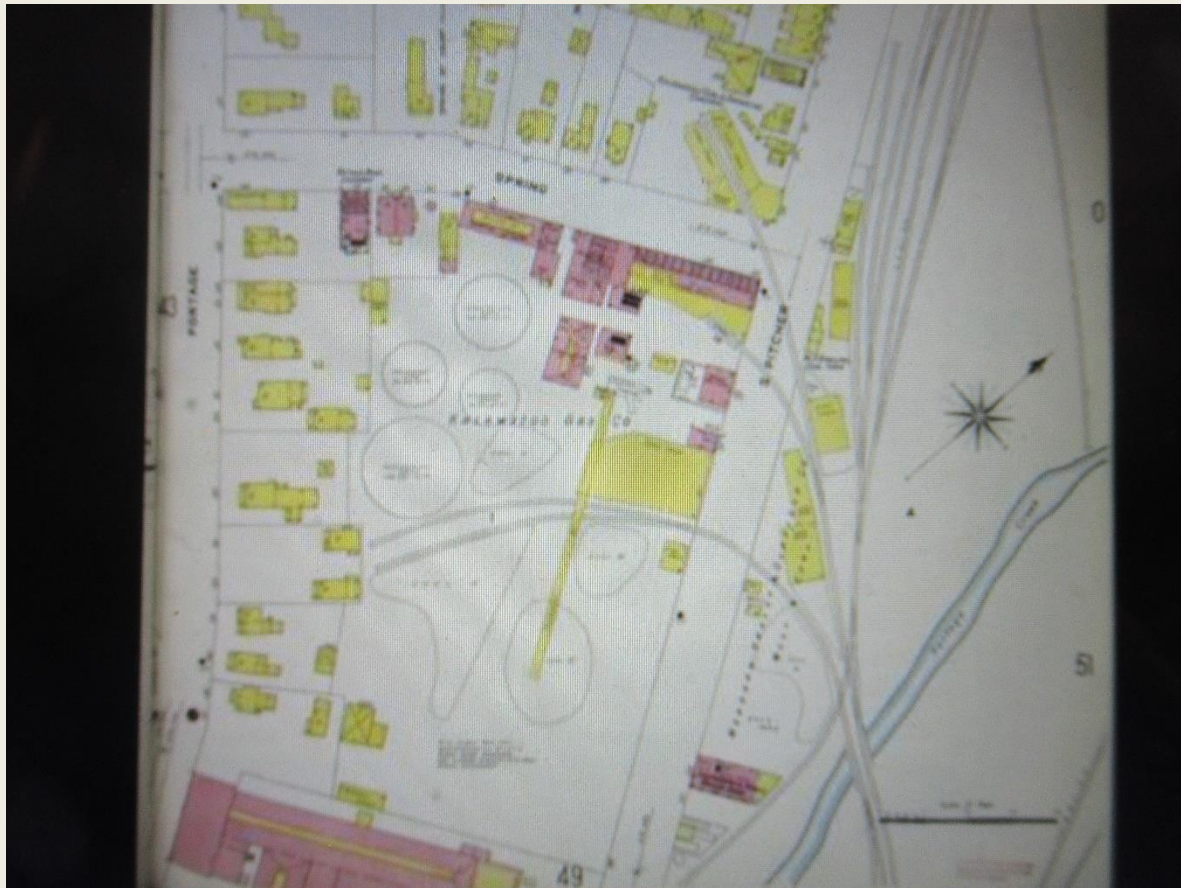


Sanborn Maps – Kalamazoo, Mi. Part 2

Rich Mahaney has photographed 34 Sanborn Maps of the Greater Kalamazoo area. Since these maps are quite detailed and, in many cases, somewhat difficult to read, it is planned to include a few maps in this and the next couple of issues.







For Sale Items

Do you have an excess inventory of cars, supplies, etc. which are just taking up space and most likely will never be used? You can list these items here and try to sell them, so you can buy more train stuff.

To list your for-sale items here, send your list of items along with a picture if one is available, a description of your item(s) along with your asking price and contact information. Send your information to alanwbau@gmail.com.

Reader's Comments

I received the following note from Division 9 Member Bill Lauritsen, which I found interesting and included it in this issue of the Yardmaster. This got me to thinking this could be a good way to get members more involved, so I thought we would try a new column titled **Reader's Comments**.

The following article was written by Division 9 Member Bill Lauritsen.

In 1969, a music group called "The Band" released their second record album. The fifth track was a song called Up On Cripple Creek and it charted immediately and rose to a top 25 hit for them.

Why do I draw your attention to this? Because Menards has been releasing buildings and vehicles for the last two years with Cripple Creek as the logo. It comes in both O gauge and HO gauge in already built form and together they make a really nice grouping of buildings for a small town or way stop on a layout. You can also retile the buildings to suit your needs. The cost is usually less than a comparable Walters prebuilt unit and not much more than a kit. On my Michigan Central layout I have them as a way stop and have them mounted on interchangeable platforms so each time I have visitors they have a little different look to that location. Still working on detailing each platform.

NOTE: There really is a place called Cripple Creek in the United States! I was surprised to find it when I checked as I thought it was a made-up name. I am guessing that a Menards, family member liked this song as a youngster and it stuck with them, so when it came time to name this group out came that title. These units can be special ordered and come in about a week. If interested check in at the hardware or building supply desk and the clerk there can help you find what you want or go to the Menards web site to investigate and order directly.

PLEASE note there is a small handling fee if sent to the store, it is more to have it sent directly to your house. Happy railroading!

NMRA Achievement Program

Do you have any interest in the NMRA-NCR Achievement Program. If you want more information or have any specific questions, contact our Division 9 Achievement Program Coordinator - Dorman Wilson N8YNW@Charter.net.

Next Month Issue – Highlights

- Summary of Dan Lewis' MMR Presentation on DPM Kits
- Layout Winter Snow Scenes
- Snow Covered Trees
- Schedule of Upcoming Events

Wrap-up

Most likely I will be missing several upcoming Membership Meetings as I deal with a family health problem. I am pleased to announce that Greg Marvin has agreed to take the minutes and record attendance when I am unable to attend. I will curtail Alan's Model Railroading Adventures until I have time to actually work on my layout. I expect to be able to continue publishing the Yardmaster Newsletter.

Thanks to all those that contributed to this month's newsletter.

Alan Bau
Divisions 9 Scribe & Newsletter Editor
alanwbau@gmail.com